

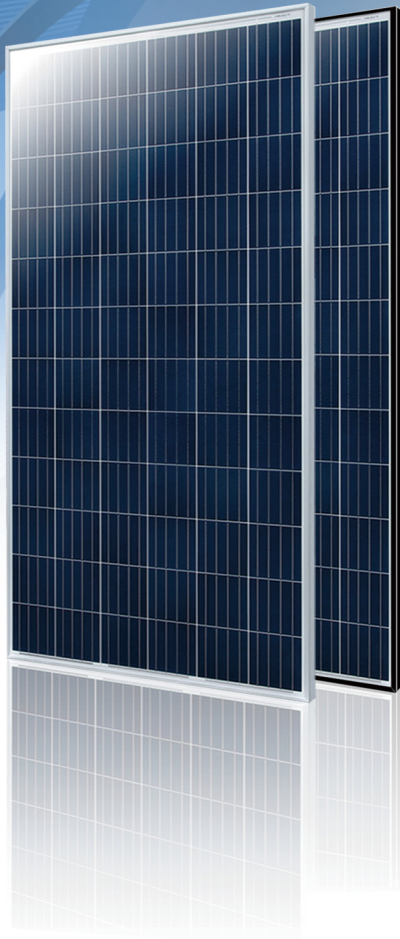
Green Technology Creates Golden Future

PV-Module

10 years professional brand, 10 years quality pursue
10 years professional photovoltaic products manufacturer

P2 series

Polycrystalline Module



MYP2072-345

MYP2072-340

MYP2072-335

MYP2072-330

MYP2072-325

KEY FEATURES



5/6/9 Busbar Solar Cell

5/6/9 busbar solar cell adopts new technology to improve the efficiency of modules, offers a better aesthetic appearance, making it perfect for rooftop installation.



High Efficiency

Higher module conversion efficiency (up to 17.78%) benefit from half cell structure (low resistance characteristic).



PID Resistance

Excellent Anti-PID performance guarantee limited power degradation for mass production.



Low-light Performance

Advanced glass and cell surface textured design ensure excellent performance in low-light environment.



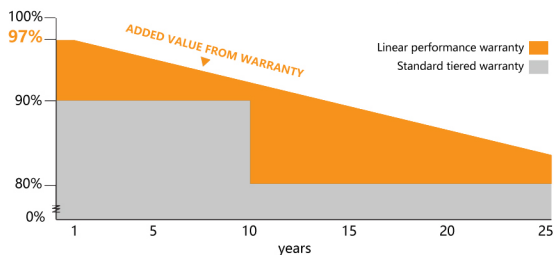
Severe Weather Resilience

Certified to withstand: wind load (2400 Pascal) and snow load (5400 Pascal).



Durability Against Extreme Environmental Conditions

Resistance to high salt mist and ammonia.



- 25 25-year performance warranty
- 10 10-year warranty on materials and workmanship

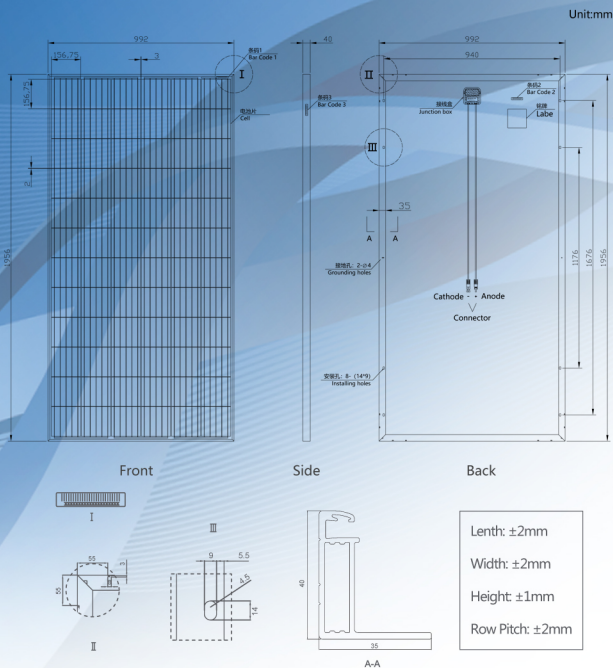
Product quality standards with reference to



www.mypvtech.com

M/MY-PD-CH-ENG20200101

Engineering Drawings



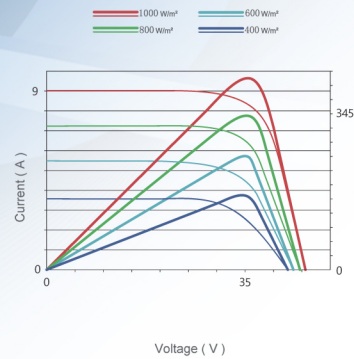
Packaging Configuration

(Two pallets=One stack)

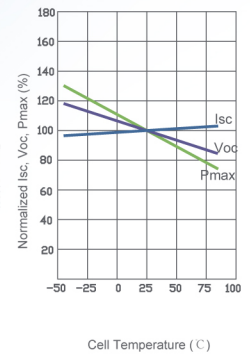
296pcs/20'GP, 594pcs/40'GP, 660pcs/40'HQ

Electrical Performance & Temperature Dependence

Current-Voltage & Power-Voltage Curves(345W)



Temperature Dependence of Isc, Voc, Pmax



Mechanical Characteristics

Cell Type	Poly 156.75x156.75mm
No. of cells	72(6x12)
Dimensions	1956x992x35mm(77.01x39.06x1.38 inch)
Weight	22.5kg(49.60 lbs)
Front Glass	3.2mm , Anti-Reflection Coating , High Transmission , Low Iron , Tempered Glass
Frame	Anodized Aluminium Alloy
Junction Box	IP67 Rated
Output Cables	TUV 1x4.0mm ² , Length 900mm or Customized Length

SPECIFICATIONS

Module Type	MYP2072-345		MYP2072-340		MYP2072-335		MYP2072-330		MYP2072-325	
	STC	NOCT	STC	NOCT	STC	NOCT	STC	NOCT	STC	NOCT
Maximum Power(Pmax)	345	255.5	340	251.8	335	248.1	330	244.4	325	240.7
Maximum Power Voltage(Vmp)	38.4	35.6	38.2	35.4	38.0	35.3	37.8	35.1	37.6	34.9
Maximum Power Current(Imp)	8.98	7.17	8.90	7.10	8.82	7.04	8.73	6.97	8.64	6.90
Open-circuit Voltage(Voc)	46.8	43.5	46.6	43.3	46.4	43.1	46.1	42.8	45.9	42.6
Short-circuit Current(Isc)	9.50	7.72	9.41	7.64	9.32	7.57	9.23	7.50	9.14	7.42
Module Efficiency STC(%)	17.78%		17.52%		17.26%		17.01%		16.75%	
Operating Temperature(°C)					-40°C~+85°C					
Maximum System Voltage					1000VDC(IEC)					
Maximum Series Fuse Rating					20A					
Power Tolerance					0~+5Wp					
Temperature Coefficients of Pmax					-0.37%/°C					
Temperature Coefficients of Voc					-0.29%/°C					
Temperature Coefficients of Isc					-0.048%/°C					
Nominal Operating Cell Temperature(NOCT)					45±2/°C					

STC: ☀ Irradiance 1000W/m²

🔌 Cell Temperature 25°C

☁ AM=1.5

NOCT: ☀ Irradiance 800W/m²

🔌 Ambient Temperature 20°C

☁ AM=1.5

🌀 Wind Speed 1m/s

* Power measurement tolerance: ± 3%

MY SOLAR TECHNOLOGY CO.,LTD.

Add : No18,Yanxing Road,Yanqiao,Huishan Economic Development District,Wuxi

Tel : +86 510 8299 1188

Fax : +86 510 8299 1688

E-mail : info@mypvtech.com



www.mypvtech.com

M/MY-PD-CH-ENG20200101